

Brainboxes VX Express Card Installation Guide



PLEASE READ CAREFULLY

The Setup.exe program will install all the driver files required to guarantee a smooth and straightforward installation

Please ensure all Brainboxes devices are disconnected before starting the installation program.

If any previous Brainboxes Boost.Software drivers are found, you will be notified on what action to take.

Follow the instructions below to start the installation process.

If you have any issues with installation, please see the product manual for further details.

Windows XP, Vista and Windows 7 Installation

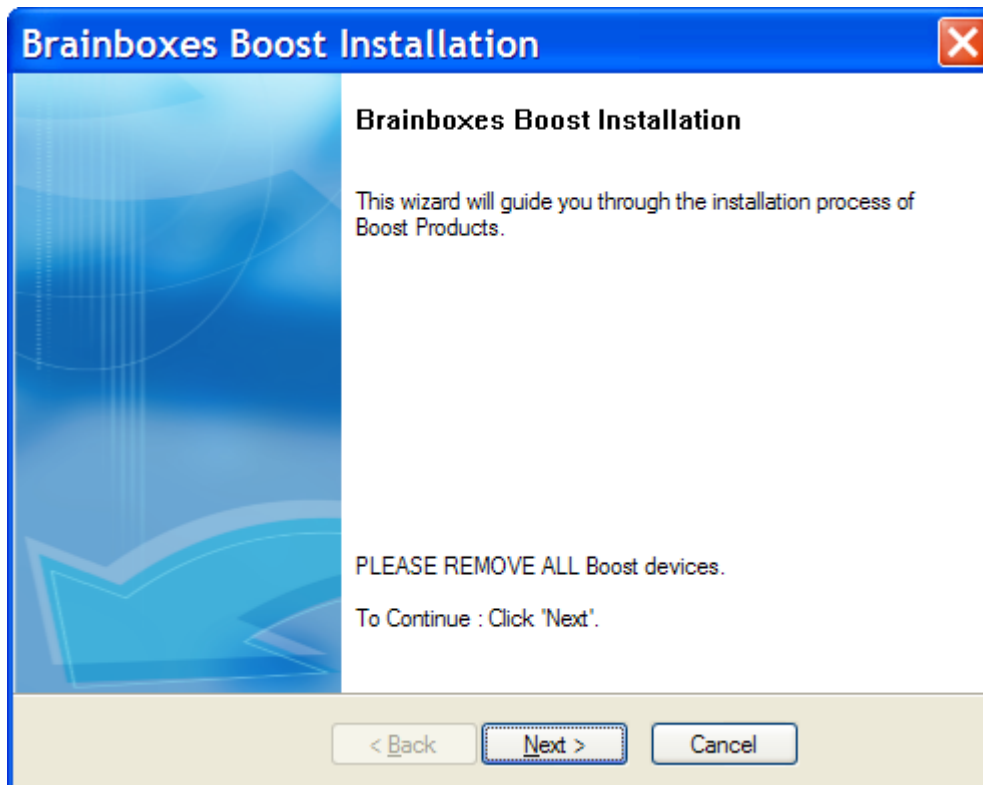
With the laptop turned on, insert the CD

Go to Start → My Computer → Right Click the CD and select Explore. This will open the CD in Windows Explorer for browsing the contents of the CD.

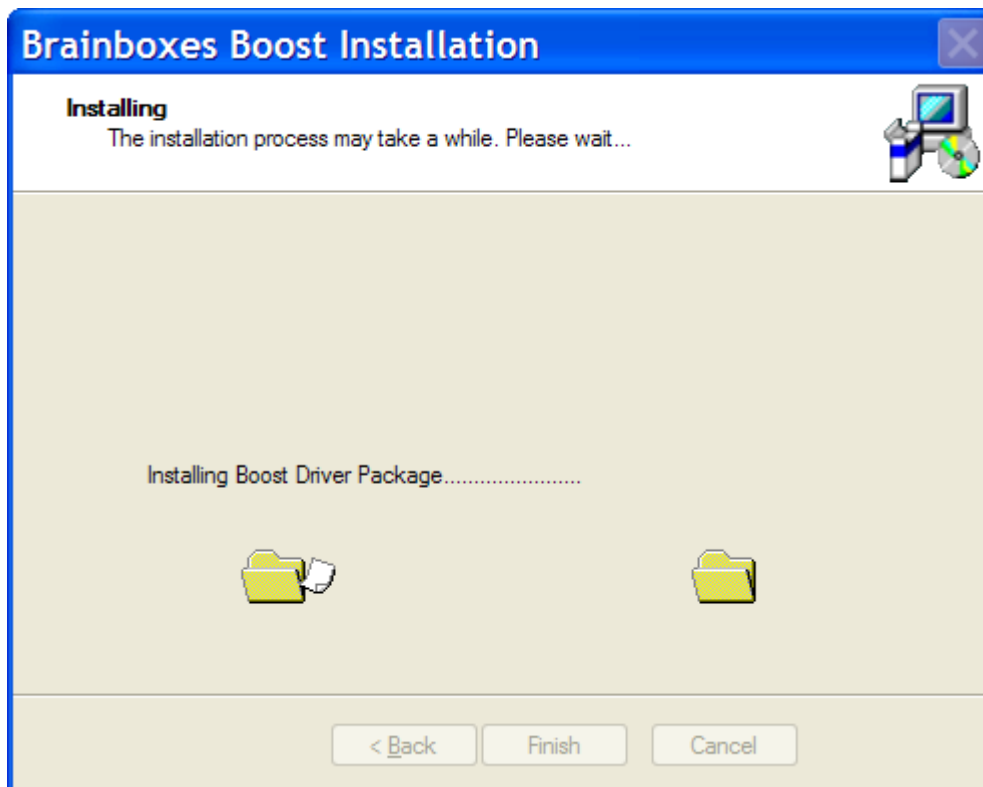
Locate the “Setup.exe” program on the CD and double click to launch.

Ensure all VX ExpressCard devices are REMOVED before proceeding. Otherwise installation may not complete successfully.

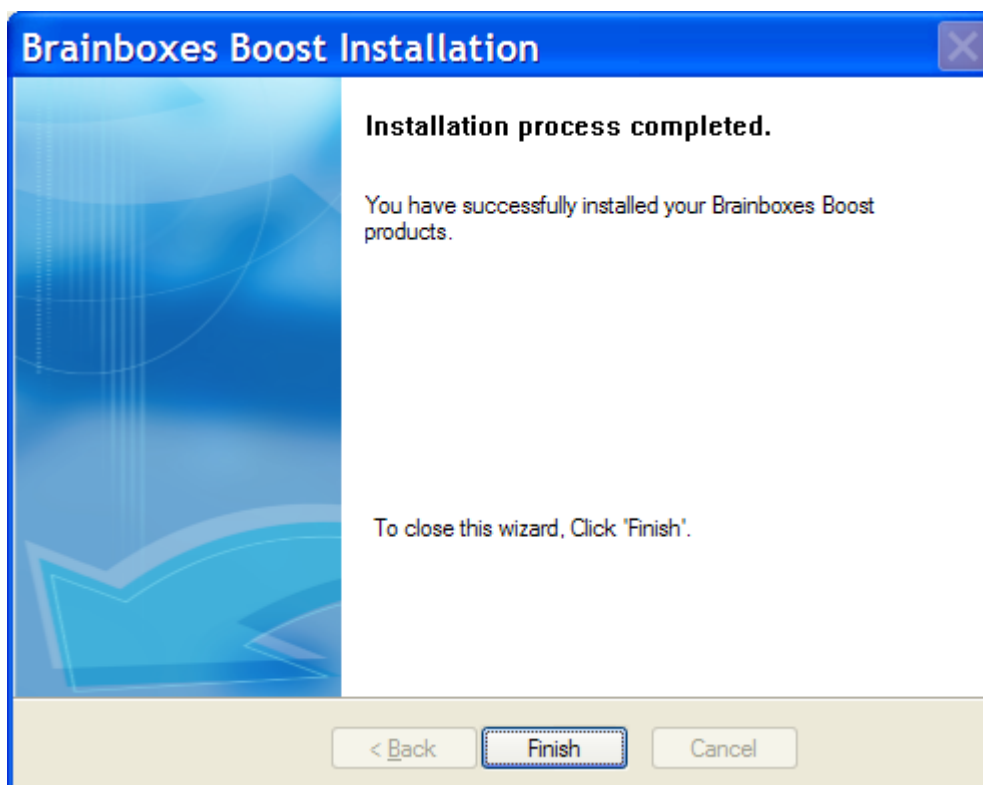
Click Next



The drivers will then be installed. This may take a while, depending on your system.



Installation Complete. Click Finish.



Insert your VX Product (s).

Pop up balloons will appear as the device is recognised by the preinstalled drivers. The example below is for a VX-001, and may differ slightly per product.



Once installation is complete (indicated by last balloon above), your device will now be ready to use.